

Key
 Settlement
 Edge of hub

Commuting In-Flow (number of people)

➔ 0 - 100
➔ 101 - 400
➔ 401 +

Commuting Out-Flow (number of people)

➔ 0 - 100
➔ 101 - 400
➔ 401 +

Source: ONS, 2001

Source: ONS, 2001

N.B.
 + Commuting flows have been calculated at ward level.
 + The flow arrows represent the flow of workers into a ward(s) from their home ward(s). The arrow has been mapped from a central point in the ward(s) and does not relate to specific X&Y locations.
 + Certain commuting flows represent an amalgamation of those people who live/work in a number of wards. Wards have been amalgamated to define key settlements.

nlp Nathaniel Lichfield and Partners

Project: Pembroke Haven Complementarity Study

Title: Travel to Work Commuting Flows: Haverfordwest Hub - Haverfordwest inward and outward flows

Client: Welsh Assembly Government

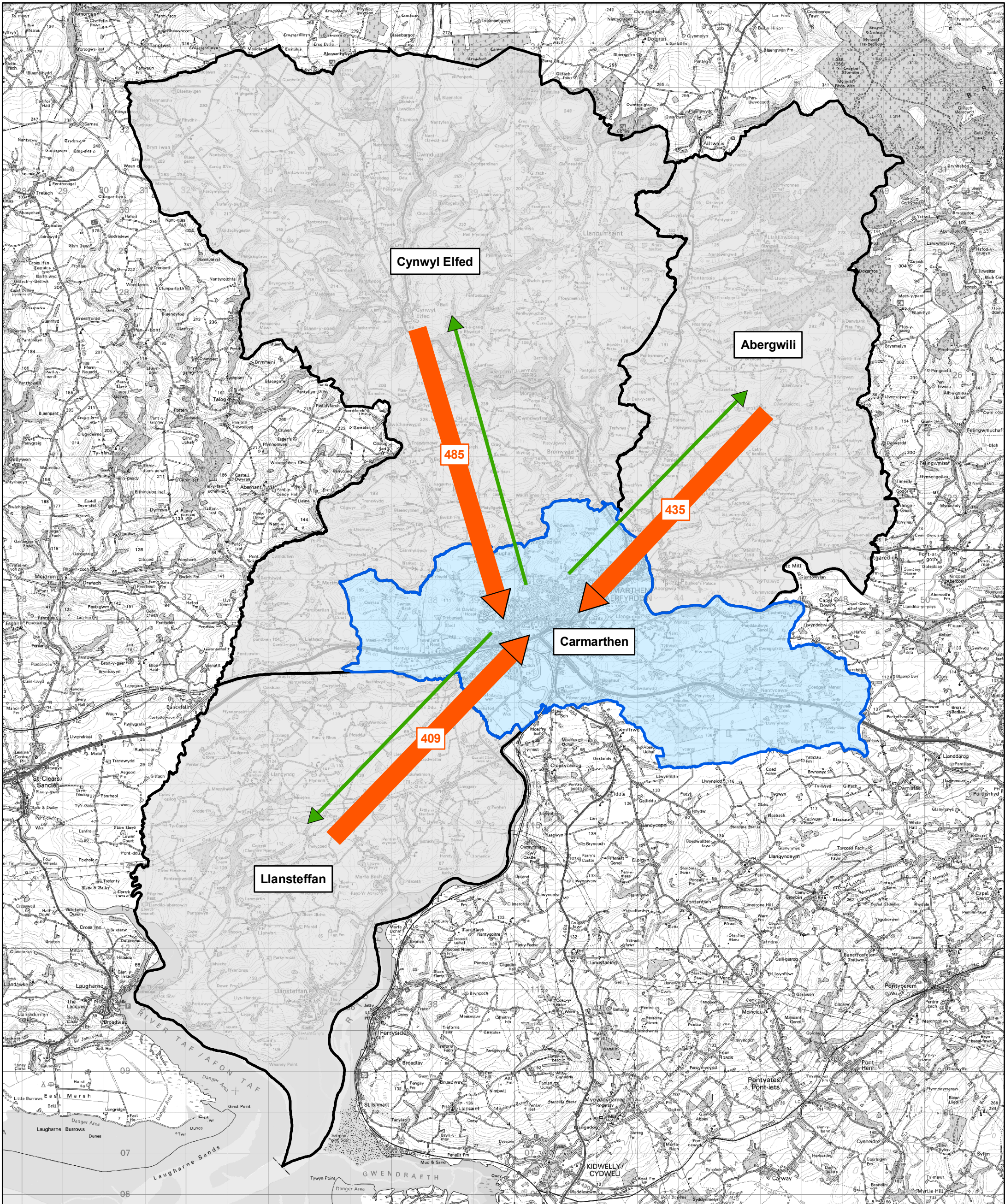
Date: 19.03.09

Scale: 1 : 90,000 @ A3

Drawn by: MAR

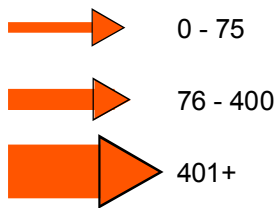
Drp No: GIS30576-014

Based upon Ordnance Survey mapping with the permission of Her Majesty's Stationery Office. © Crown Copyright reserved. Licence number AL50594A
 GIS Reference: S:WE30576 - Pembroke Haven Complementarity Study - Travel to Work Commuting Flows - Haverfordwest Hub - Haverfordwest - 19.03.09.mxd



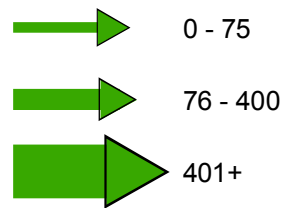
Key
 Settlement
 Edge of hub

Commuting In-Flow (number of people)



Source: ONS, 2001

Commuting Out-Flow (number of people)



Source: ONS, 2001

N.B.
 + Commuting flows have been calculated at ward level.
 + The flow arrows represent the flow of workers into a ward(s) from their home ward(s). The arrow has been mapped from a central point in the ward(s) and does not relate to specific X&Y locations.
 + Certain commuting flows represent an amalgamation of those people who live/work in a number of wards. Wards have been amalgamated to define key settlements.