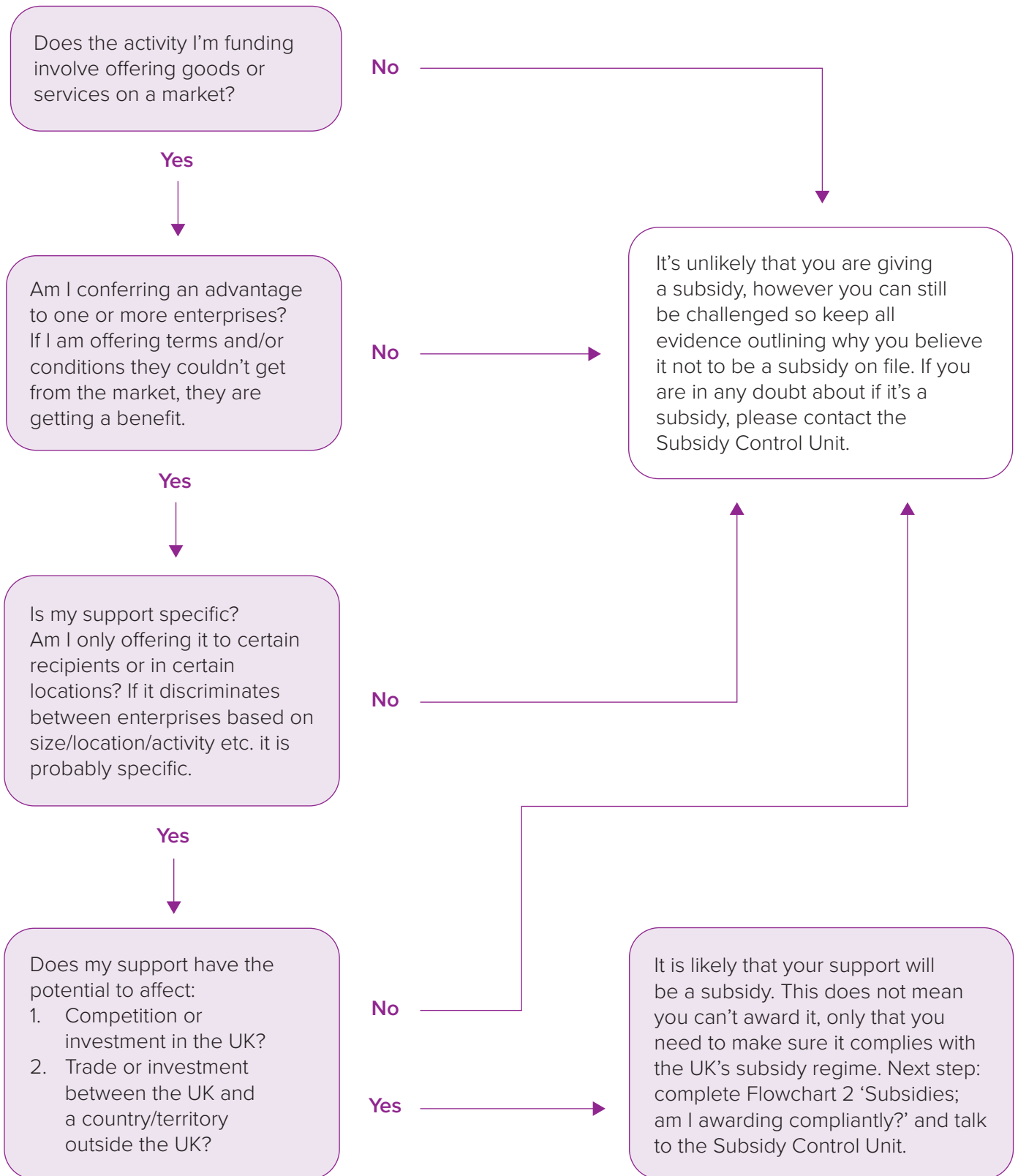


Flowchart 1: Providing support – am I awarding a subsidy?

In the UK, the provision of subsidies (previously known as State aid) is controlled by the UK subsidy regime. This is not designed to stop you giving subsidies, only to ensure that they are compatible with the UK's subsidy rules. The first question to address is; are you giving a subsidy?



Remember; if in doubt, contact the Subsidy Control Unit as they will be able to help you with your assessments.