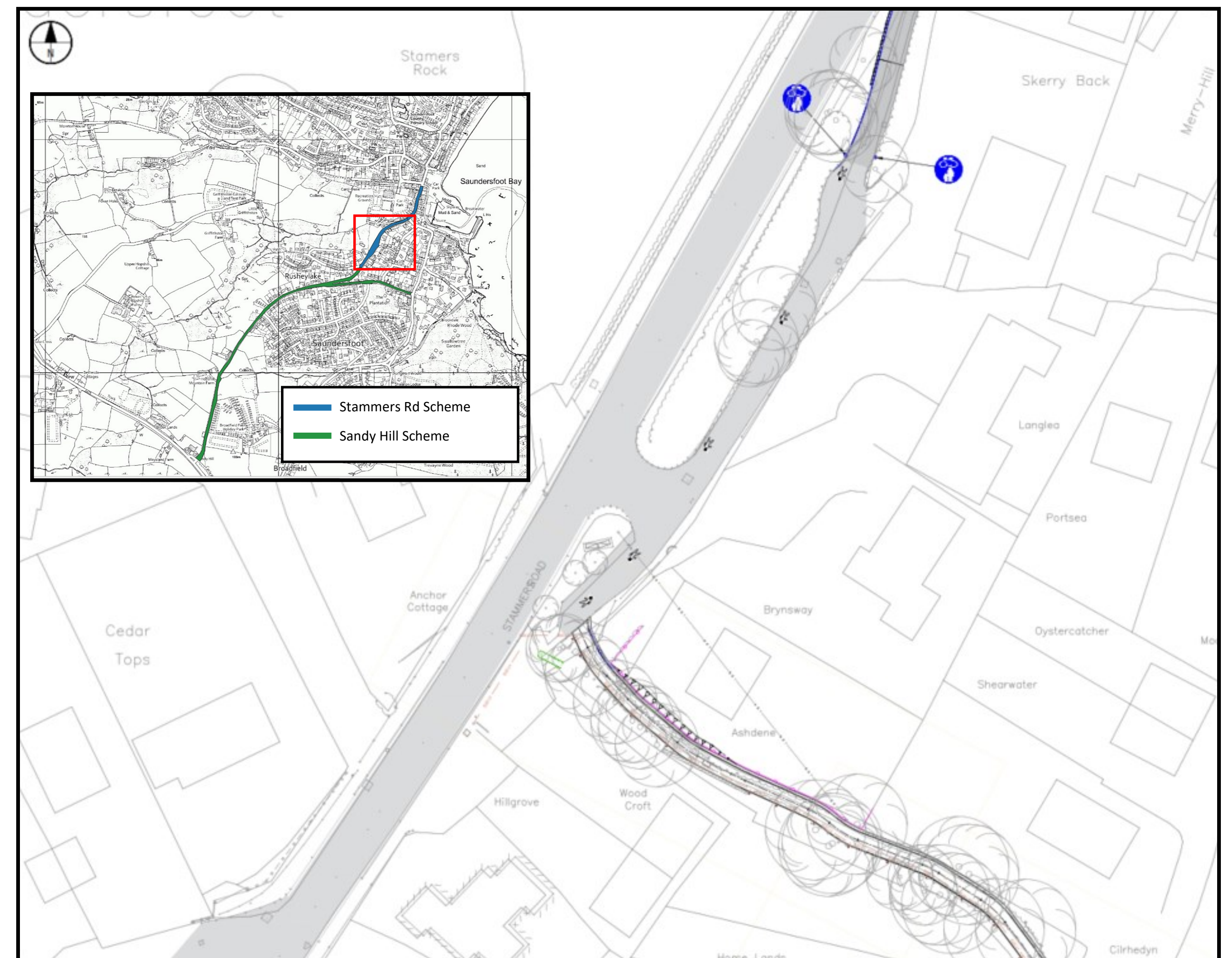
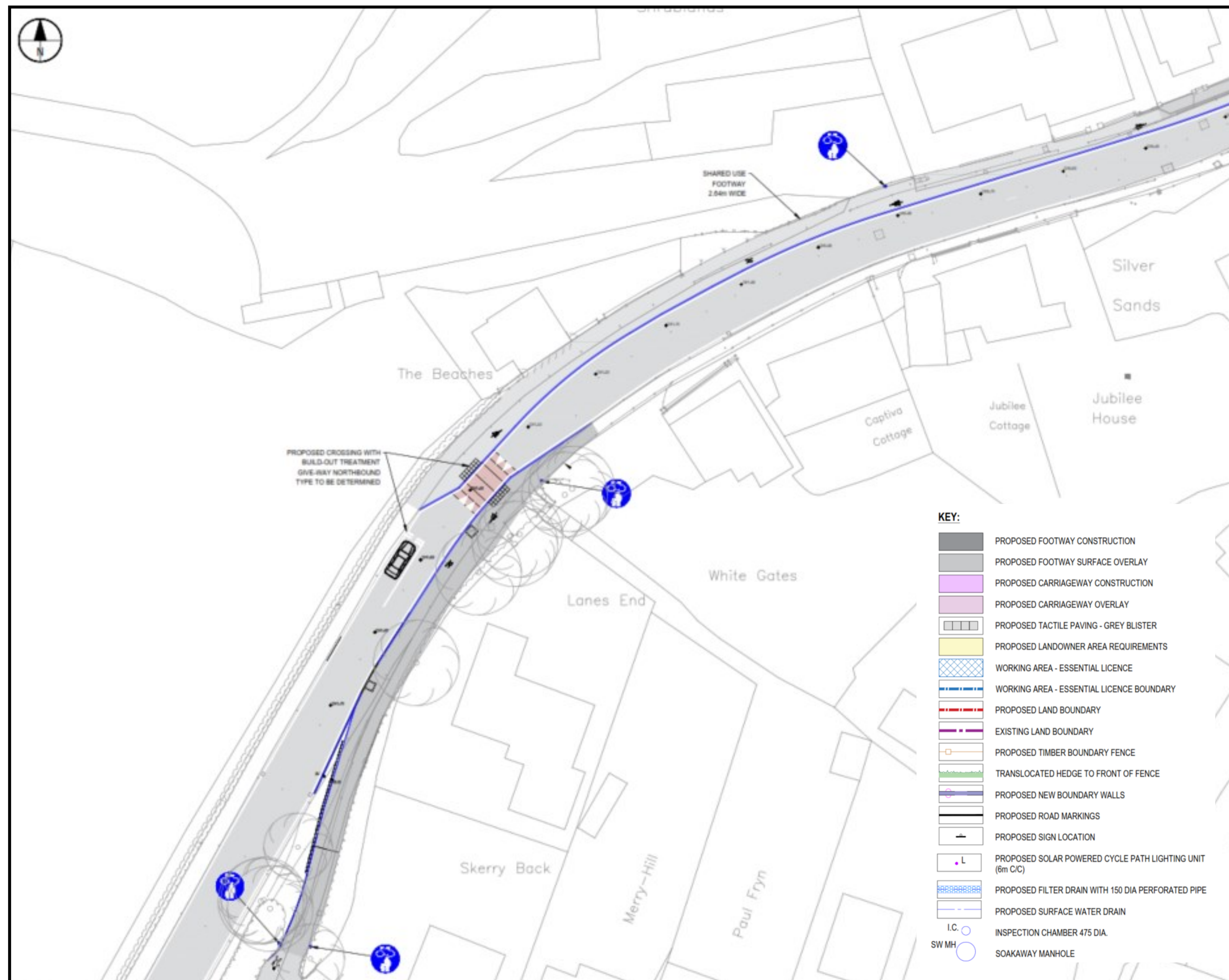


# Stammers Road Active Travel Scheme—Old Stammers

PLACE: SAUNDERSFOOT



## OLD STAMMERS ROAD SCHEME

Provision of a continuous Shared Use Path route for pedestrians and cyclists between Saundersfoot Harbour and Stammers Road

Forms Phase 2 of the overall wider scheme, connecting the Harbour with Saundersfoot Station.

## Proposal includes the following works:

- ◊ Proposed crossing with build-out treatment
- ◊ Give-way, northbound, (type to be determined)
- ◊ Cycle path (2.64m wide) linking onto Sandy Hill Road
- ◊ Improved shared use path onto St Brides Lane (footpath) and carriageway
- ◊ Localised carriageway widening at Old Stammers / B4316 junction
- ◊ Improved footway and carriageway surfacing along route
- ◊ Increases connectivity between village core and Sandy Hill Rd / A478, as part of wider strategic route.

