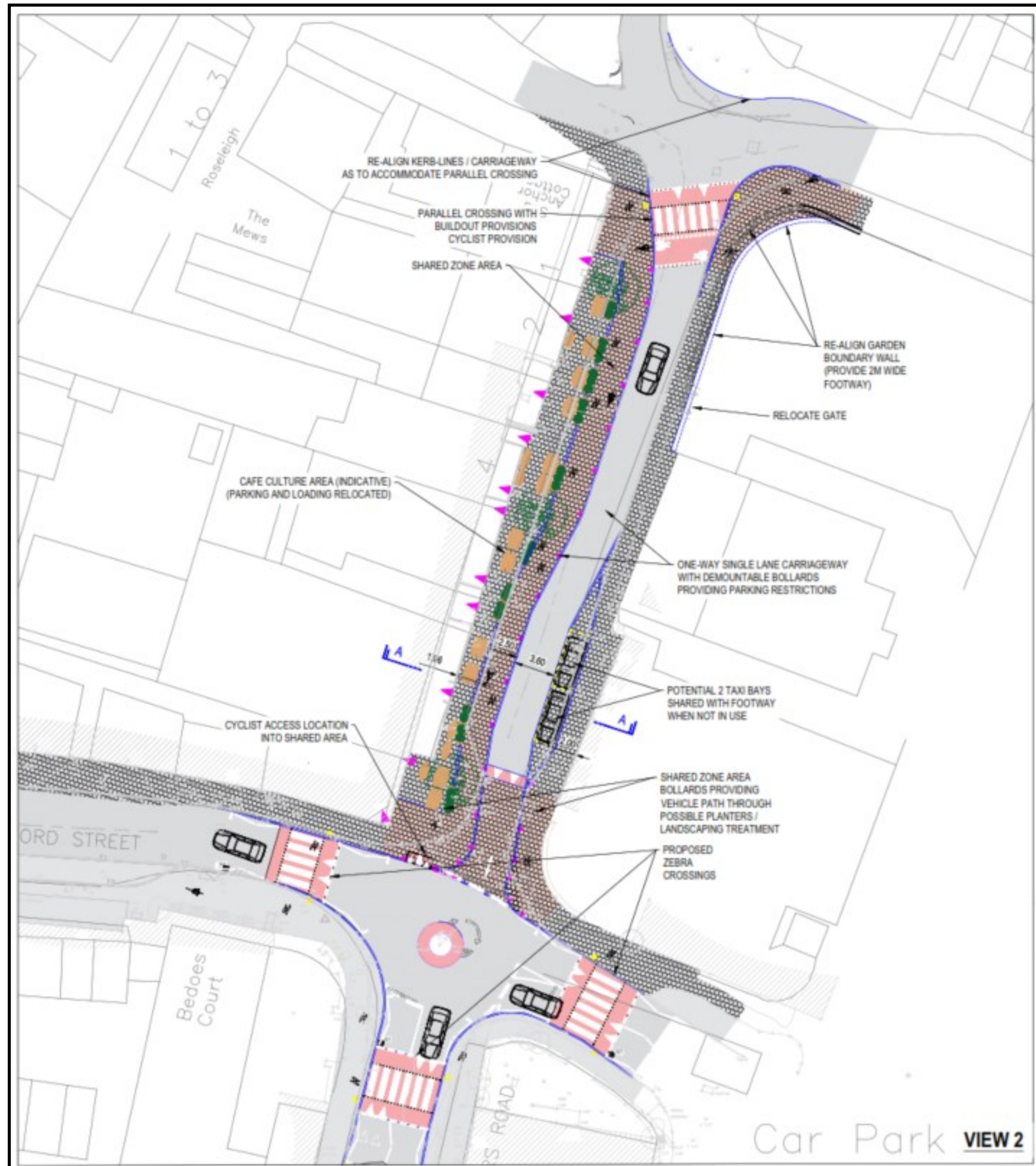


Stammers Road Active Travel Scheme—Cambrian Place

PLACE: SAUNDERSFOOT

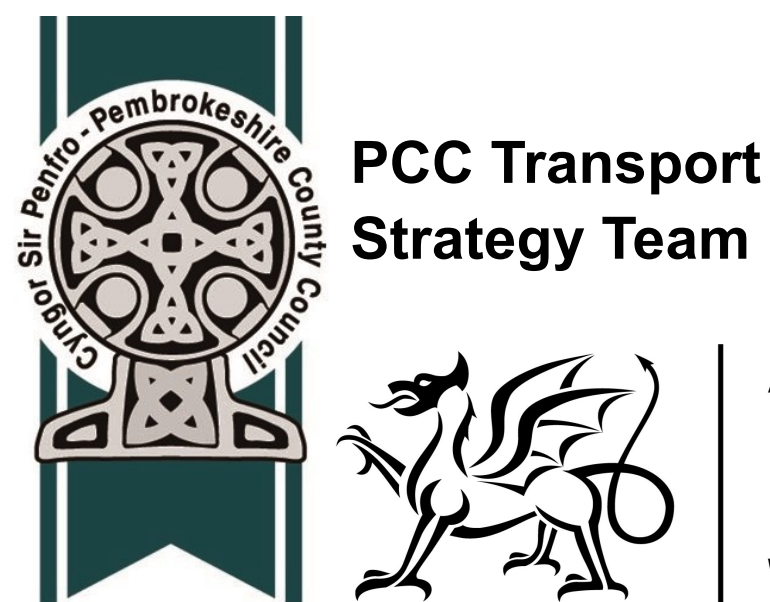


STAMMERS ROAD SCHEME: Cambrian Place

During COVID, the quieter environment allowed for the use of the public highway to provide more outdoor seating for local businesses and the creation for a cafe culture space. This was well received by local residents. The current proposals along Cambrian Place seek to reinstate that traffic calm environment, to enable safer pedestrian/cyclist movements through this area, while still enabling traffic flow through the village.

The scheme proposes the following improvements:

- Cambrian Place improvements provide a traffic calmed neighbourhood which focuses on providing pedestrian and cyclist moving, while allowing vehicular traffic
- Shared zone area bollard provide vehicle path through possible planters / landscaping treatments at the junction points to indicate transition into a shared surface environment
- One-way traffic flow system (between High Street and Milfrod Street), retaining a 3.6m carriageway
- Widened footways and shared zone area between pedestrians and cyclists, while retaining a separate pedestrian route on the eastern side
- Parallel crossing with buildout provision for cyclists
- Cafe Cluture areas reinstated (additional outdoor seating)
- Formalisation of two taxi ranks (which may also be utilised for loading)
- Leading on to a reconstructed junction at the Saundersfoot Harbour.



Ariennir gan
Lywodraeth Cymru
Funded by
Welsh Government

