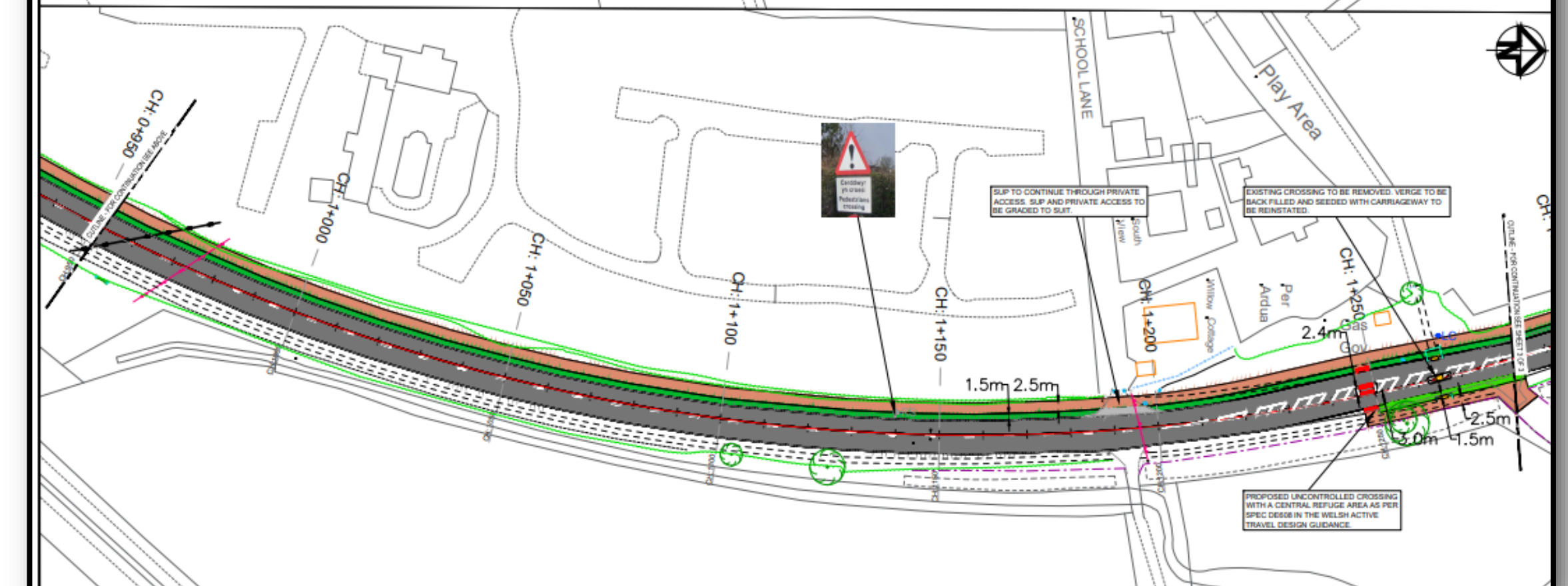
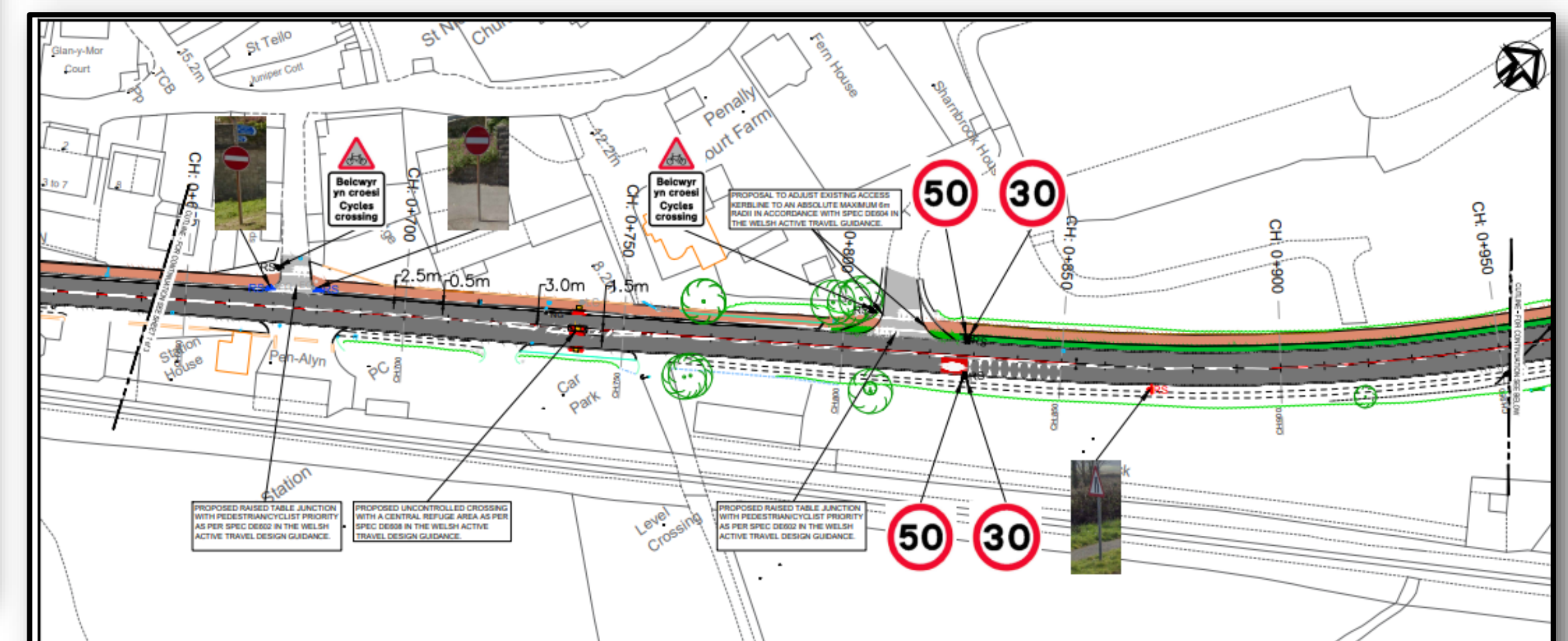
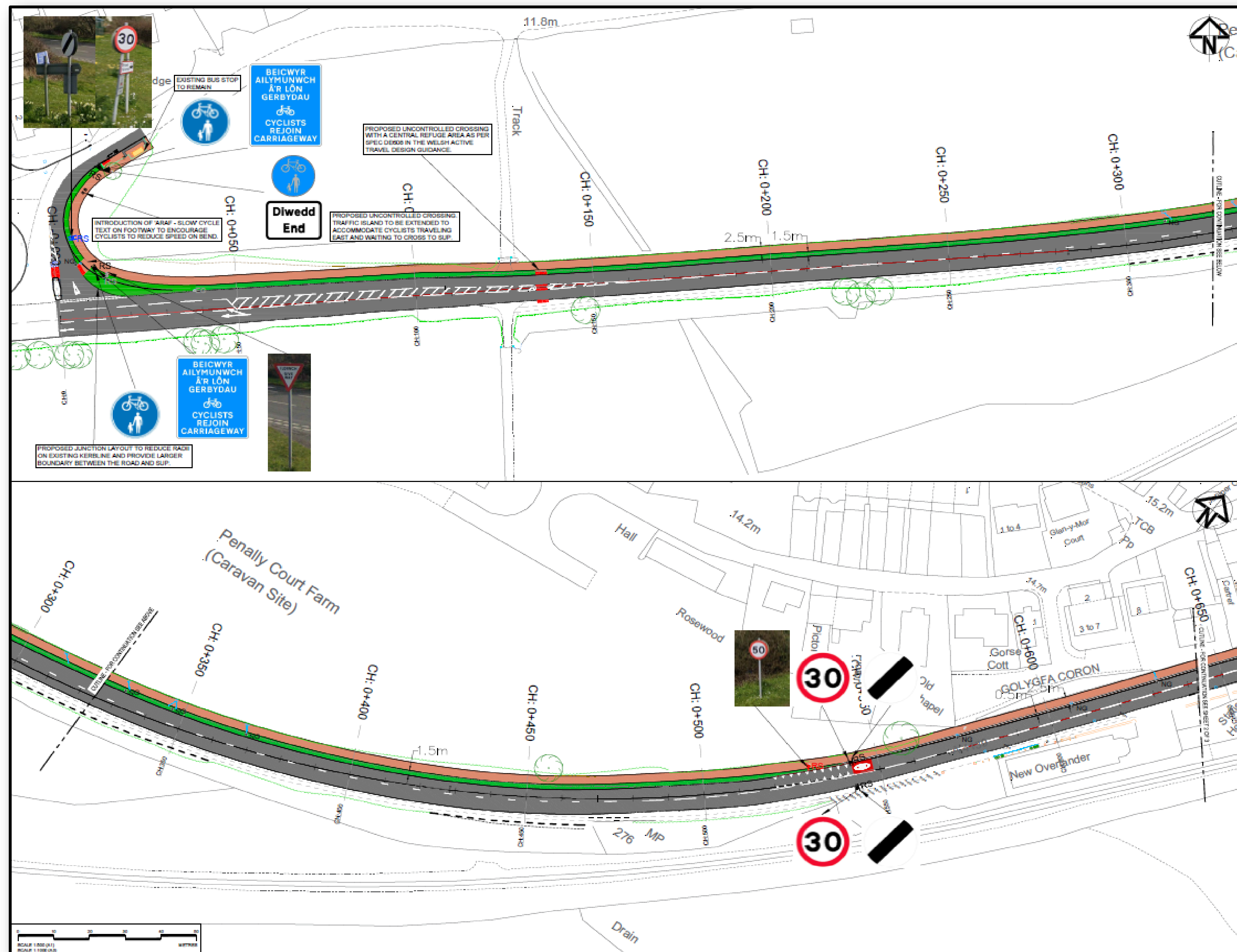


Penally Active Travel Improvements



Location: Penally



Penally Bypass

Improvements are proposed along the Penally bypass to facilitate pedestrian/cyclist movement up to Active Travel standards. The proposals include:

- Shared use path along Penally Bypass connecting to Marsh Road
- Multiple uncontrolled crossing points from East to West on route to allow cyclists and pedestrians to cross safely
- Possible new bus route along main Penally bypass (A4139) to alleviate congestion within the village core



PCC Transport Strategy Team



Ariennir gan Lywodraeth Cymru
Funded by Welsh Government